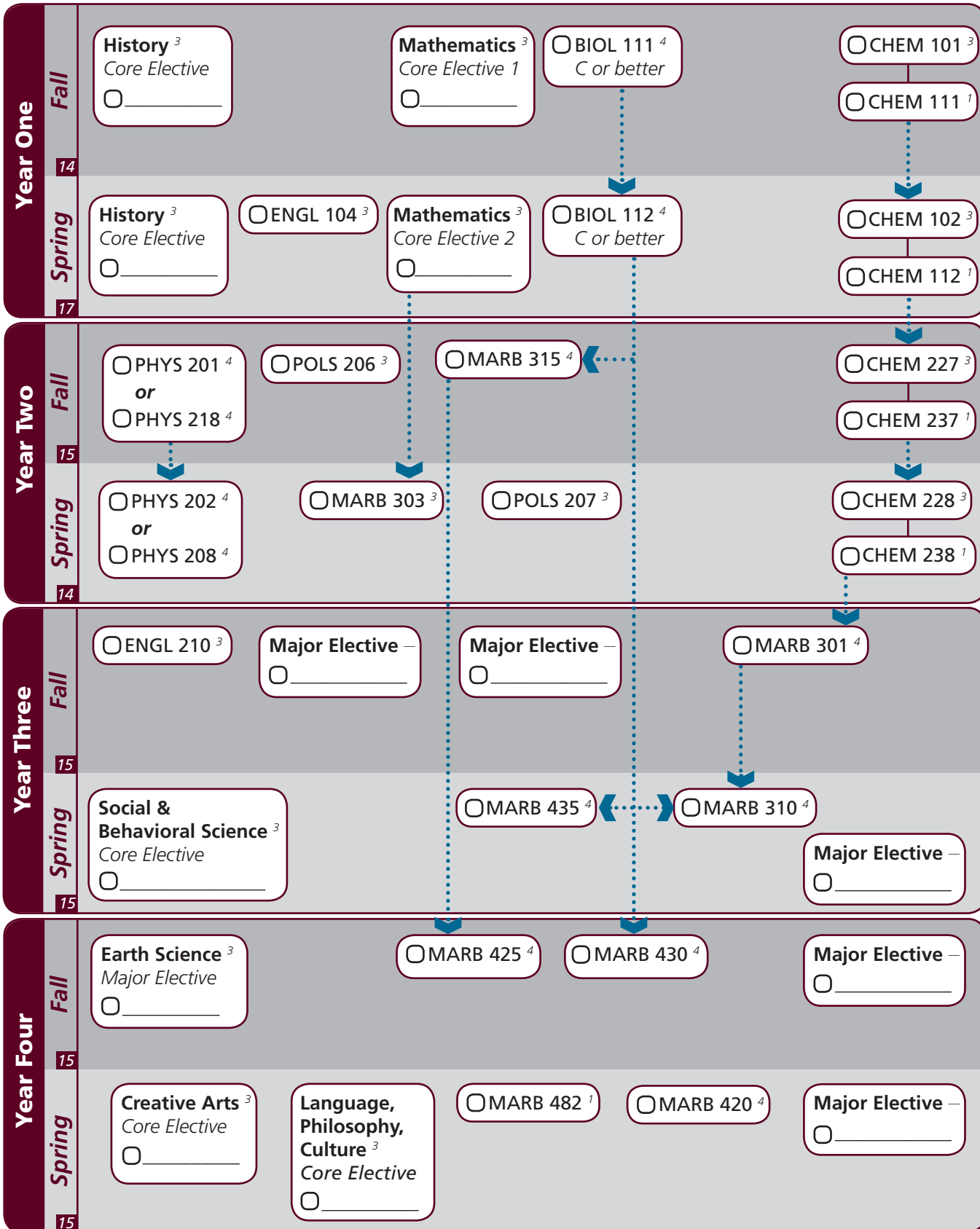


Notes: _____

- Foreign Language ⁶
- CAEX 001 ICD ³
- CAEX 004 ICD ³



I understand that the courses indicated on this sheet are required for my degree. If I change any of the course recommendations without consulting an academic advisor, it could affect my graduation timing, financial aid or could not count towards my degree.

Student Signature: _____ **Date:** _____

Academic Advisor Signature: _____ **Date:** _____

Key

- Pre-requisite
- _____ Co-requisite
- ³ Course Credit Hrs
- ¹⁵ Semester Credit Hrs

Notes:

Major	Texas A&M University at Galveston Course Options					
Major Courses ²⁰	BIOL 111 MARB 430	BIOL 112 MARB 420	MARB 301 MARB 425	MARB 303 MARB 435	MARB 310 MARB 482	MARB 315
Major Electives ²⁰ <i>Select 20 hours</i>	A minimum of 12 credit hours from: BIOL 351 MARB 311 MARB 330 MARB 335 <i>MARB 340</i> MARB 360 MARB 400 MARB 401 MARB 403 MARB 404 MARB 407 MARB 408 MARB 410 MARB 430 MARB 466 MARS 360 For the remainder of the 20 hours, a maximum of 2 mammals courses (MARB 400, MARB 401, MARB 403, MARB 404, MARB 407), 1 scientific diving course (MARB 345 or MARB 350), or any other MARB 300-400 level classes					
Earth Science Elective ³ <i>Select 1 course</i>	GEOL 101-499, OCNG 251-499					
A cumulative 2.0 GPR must be achieved on all major requirement courses						

Core	Texas A&M University at Galveston Course Options					
Communication ⁶ <i>Both courses required</i>	ENGL 104	ENGL 210				
Mathematics ⁶ <i>Select 2 courses</i>	1 from: MATH 151 or MATH 142 1 from: MATH 140, MATH 141, MATH 150, MATH 152, PHIL 240					
Life & Physical Sciences ⁹ <i>All courses required</i>	CHEM 101 CHEM 228	CHEM 111 CHEM 238	CHEM 102 PHYS 201 or 218	CHEM 112 PHYS 202 or 208	CHEM 227	CHEM 237
Language, Philosophy, Culture ³ <i>Select 1 course</i>	ANTH 210 ENGL 334 HIST 242	ANTH 316 ENGL 335 PHIL 251	<i>ENGL 204</i> <i>ENGL 338</i> <i>SPAN 201</i>	<i>ENGL 222</i> <i>ENGL 374</i> <i>SPAN 202</i>	<i>ENGL 253</i> <i>GEOG 202</i>	ENGL 330 <i>GEOG 301</i>
Creative Arts ³ <i>Select 1 course</i>	<i>ARTS 150</i> <i>MUSC 226</i>	ENGL 212	<i>ENGL 251</i>	KINE 210	HISP 204	MAST 352
Social & Behavioral Science ³ <i>Select 1 course</i>	ANTH 202 PSYC 107	<i>COMM 365</i> <i>SOCI 205</i>	ECON 202	ECON 203	<i>GEOG 201</i>	<i>MARS 210</i>
American History ⁶ <i>Select 2 courses</i>	HIST 105	HIST 106	HIST 226	HIST 232		
Govt/Political Science ⁶ <i>Both courses required</i>	POLS 206	POLS 207				

University	Texas A&M University at Galveston Course Options					
Writing Intensive ⁶	MARB 435	MARB 482				
International and Cultural Diversity ⁶ <i>Select 2 courses</i> <small>Note that any blue marked major or core course will concurrently fulfill both requirements</small>	ANTH 210 ENGL 251 GEOG 201 MARB 407 MART 400 SPAN 201	ARTS 150 ENGL 253 GEOG 202 MARE 400 MAST 411 SPAN 202	COMM 365 ENGL 338 GEOG 301 MARR 400 MUSC 226	ECON 452 ENGL 339 HIST 405 MARS 210 NAUT 400	ENGL 204 ENGL 374 MARA 440 MARS 280 POLS 366	ENGL 222 FILM 251 MARB 340 MARS 432 MARS 432 SOCI 205

Courses in this section can concurrently fulfill a Core or Major Requirement;
Two semesters of a single foreign language is required for students who did not complete the foreign language req in high school